

SCREENING, BRIEF, INTERVENTION, & REFERRAL TO TREATMENT: CREATING COLLABORATIVE SCHOOL RELATIONSHIPS

Allison Kilcoyne, MS, RN, FNP-BC, Vice President of Integration,
Wellness and Community Development, North Shore
Community Health, Salem, MA

NOTHING TO DISCLOSE

WHAT YOU SIGNED UP FOR....

Implementing screening, brief intervention, and referral to treatment (SBIRT) at a school-based health center requires building collaborative relationships with the school community. Hear how to engage school and community personnel in championing school-based health care, identify ways to build trust with stakeholders, and present a case study on co-creating a collaborative school health SBIRT program.

WHAT YOU SIGNED UP FOR....

Implementing screening, brief intervention, and referral to treatment (SBIRT) at a school-based health center requires building collaborative relationships with the school community. Hear how to engage school and community personnel in championing school-based health care, identify ways to build trust with stakeholders, and present a case study on co-creating a collaborative school health SBIRT program.

OBJECTIVES:

- Discuss ways to engage school and community personnel in championing school based health care
- Identify ways to build trust with stakeholders
- Present a case study on co-creating a collaborative school / health center program

A MOMENT ABOUT SBIRT

- SBIRT is a comprehensive, integrated, public health approach to the delivery of early intervention and treatment services for persons with substance use disorders, as well as those who are at risk of developing these disorders. Primary care centers, hospital emergency rooms, trauma centers, and other community settings provide opportunities for early intervention with at-risk substance users before more severe consequences occur.
- Screening quickly assesses the severity of substance use and identifies the appropriate level of treatment.
- Brief intervention focuses on increasing insight and awareness regarding substance use and motivation toward behavioral change.
- Referral to treatment provides those identified as needing more extensive treatment with access to specialty care.

<https://www.samhsa.gov/sbirt/about>

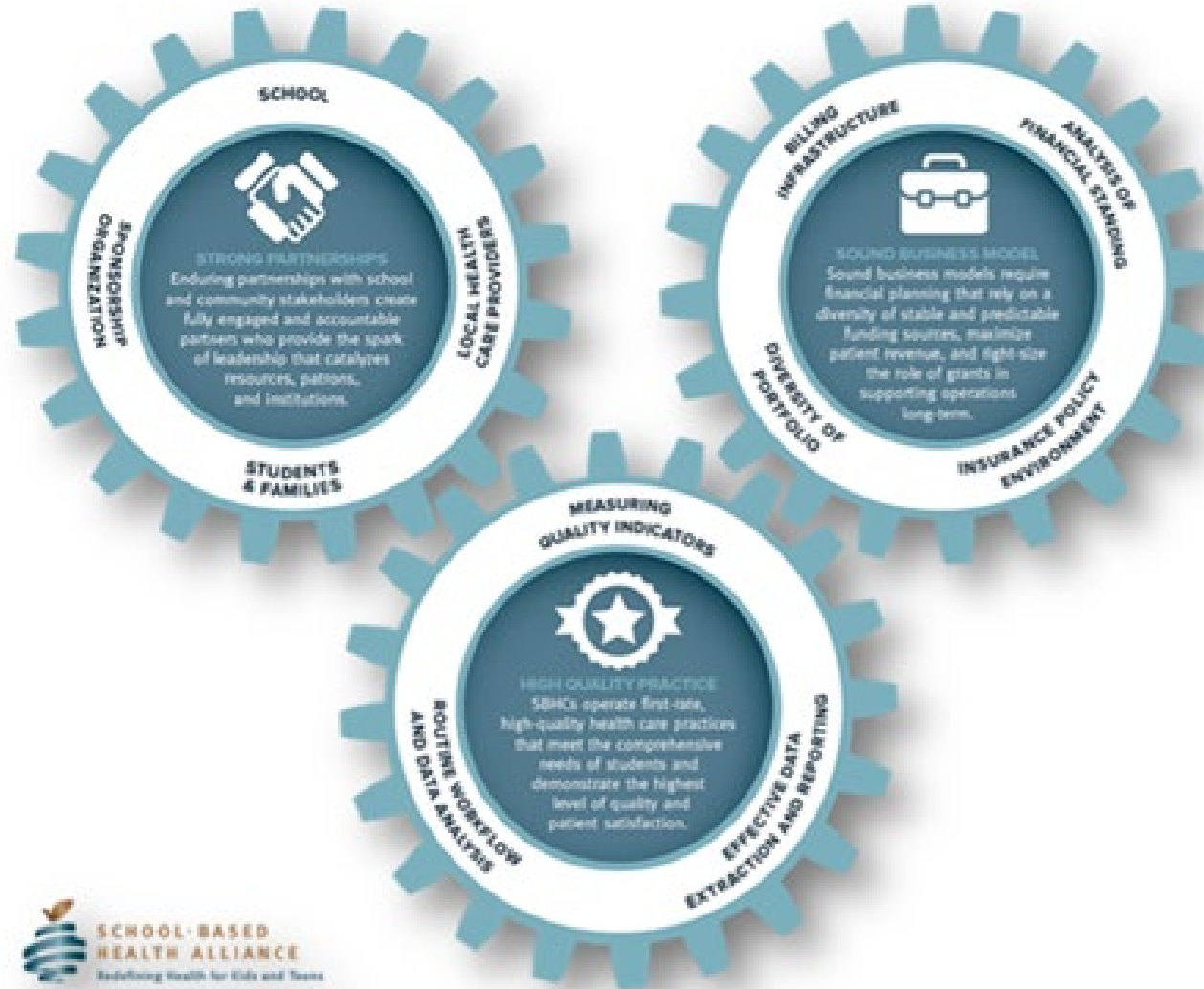
ASSUMPTIONS FOR THIS PRESENTATION:

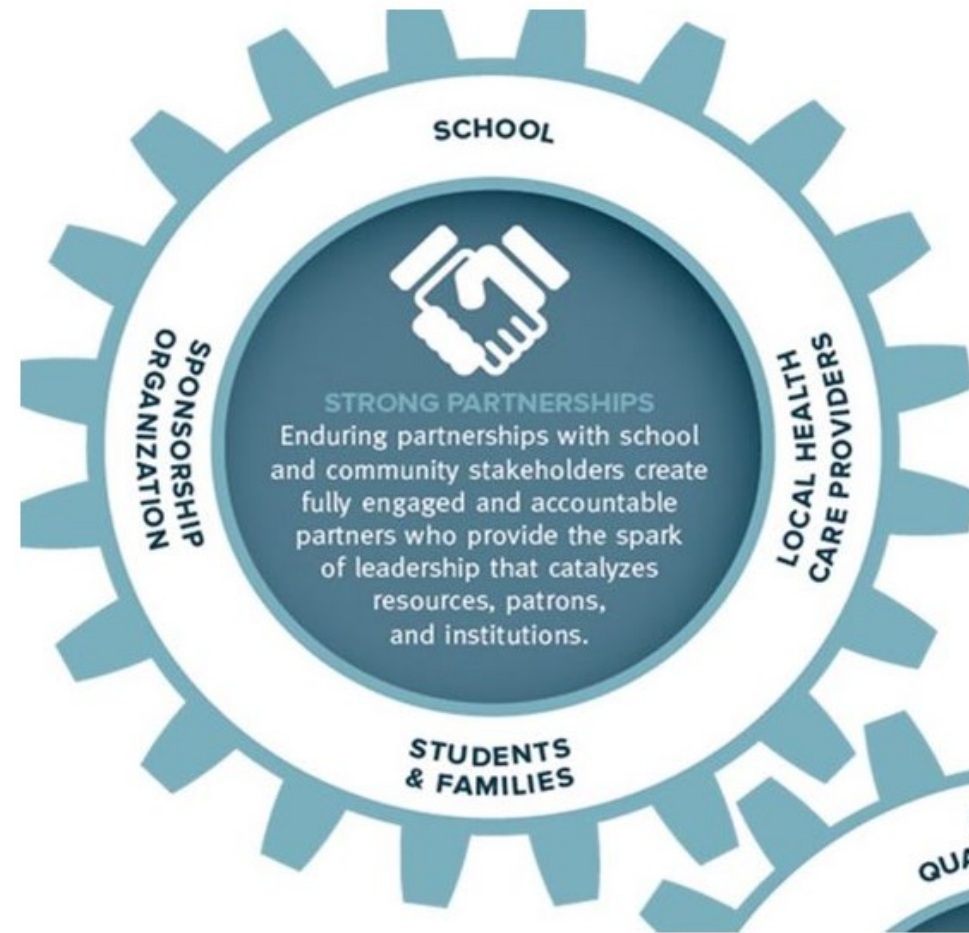
- You have some level of understanding and competency in SBIRT (Screening, Brief Intervention Referral to Treatment)
- You believe in the SBHC model of care
- Working at the intersection of health care and education is full of opportunities and challenges
- Humans are complicated

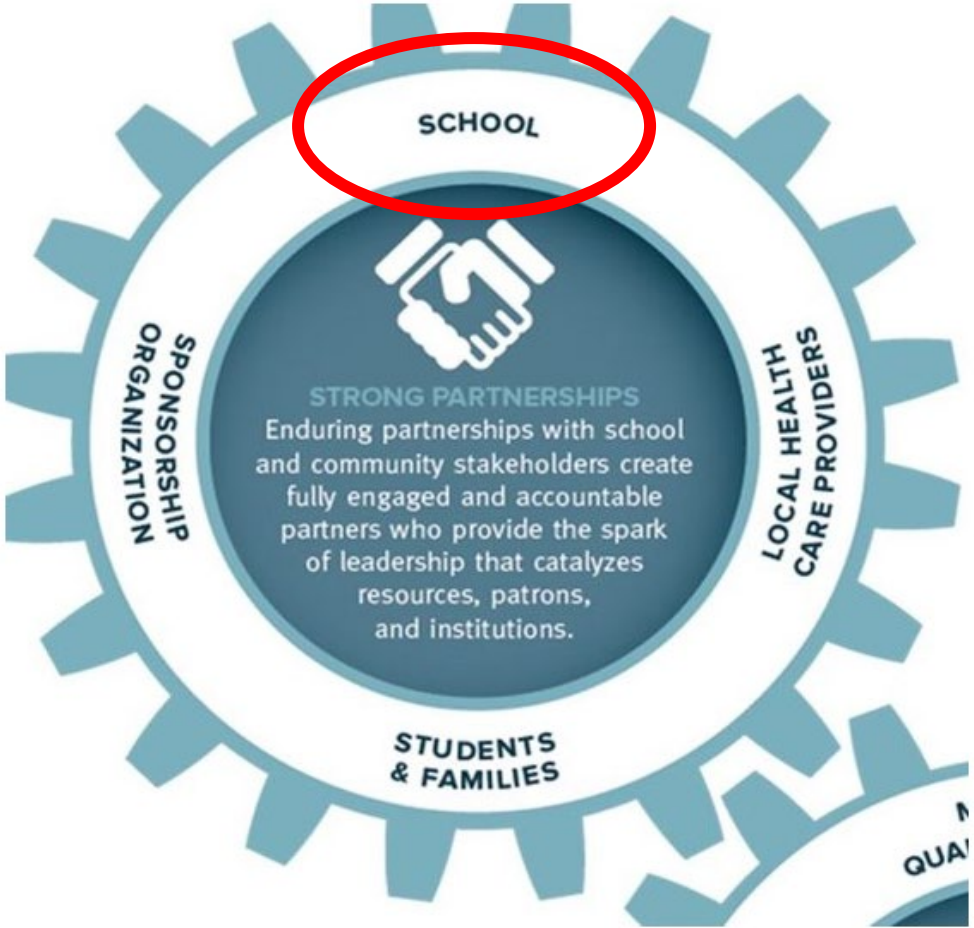
CONTEXT FROM MASSACHUSETTS

- SBHCs in MA have been using SBIRT (CRAFT) since 2005/6 as a beta test for the researchers at Boston Children's Hospital
- In March, 2016, the Massachusetts Legislature enacted an Act relative to substance use, treatment, education and prevention (STEP Act) which outlines the requirements for public schools in the Commonwealth to engage in substance use screening and education.
- www.masbirt.org

WHAT MAKES SBHCS SUCCESSFUL





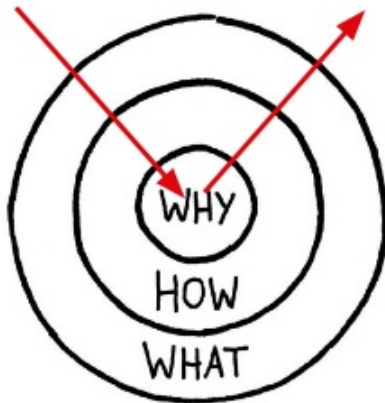


START WITH THE WHY....

Start with the why (not with the what)

Outside in / Conventional

Inside out in / Remarkable



Why? = The Purpose

What is your cause? What are your values?

How? = The Process

The specific actions to realize the Why

What?

What do you do? The result of Why. The proof

The Golden Circle according to Simon Sinek

Why SBHCs?

I believe that youth deserve access to all the services they need in order to thrive. School based health centers create that access in a high quality, efficient, safe and youth focused way.

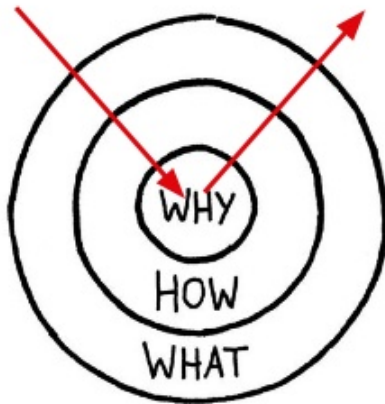
Take a moment to think of your **WHY SBHCs** and write it in the chat

START WITH THE WHY....

Start with the why (not with the what)

Outside in / Conventional

Inside out in / Remarkable



Why? = The Purpose

What is your cause? What are your values?

How? = The Process

The specific actions to realize the Why

What?

What do you do? The result of Why. The proof

The Golden Circle according to Simon Sinek

Why SBIRT?

I believe that the earlier we open conversations about substance use with youth the sooner we can help them access the education and support they need to avoid a life long struggle with substance use disorders.

Again, write your **WHY SBIRT** in the chat

COLLABORATE ON THE HOW:

- Communication, communication, communication
- Find the people with shared values
- ***Equity, Collaboration, Flexibility***
- They may not be who you think they should be
- Convene a workgroup? Join an existing group? Offer some service or expertise? *“How can I/we help you?”*

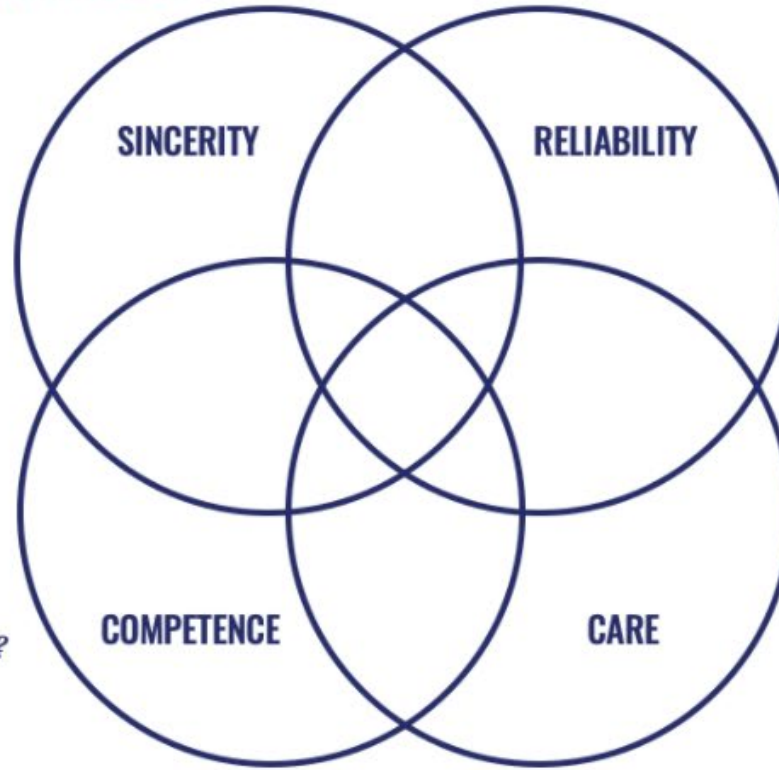
Try not to solve problems for the school. Listen intently.
Take notes. Follow up. This is not a quick process, it is a
long term relationship.

“ Trust is choosing to risk
making **something you
value** vulnerable to
another person's actions.

~ Charles Feltman

The Four Dimensions of Trust

*Do you say what you mean
and mean what you say?
Can you be believed and
taken seriously?*



*Do you meet the commitments
you make?*

*Do you have the ability to do
what you say or propose to do?*

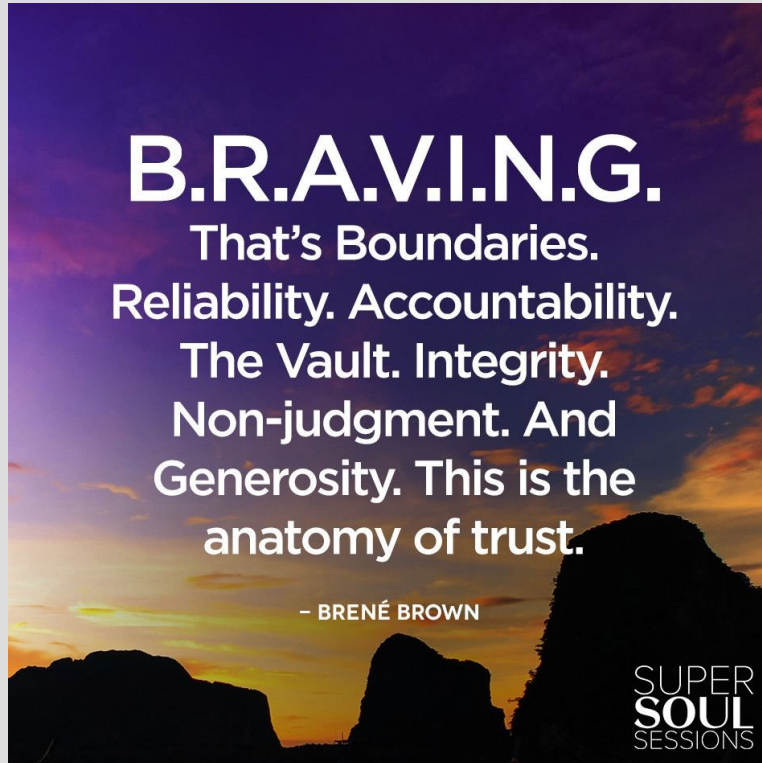
*Do you have the other person's
interests in mind when you make
decisions and take actions?*

From *The Thin Book of Trust*, Charles Feltman

SingleStone

Figure 2: The Four Dimensions of Trust (source: *The Thin Book of Trust* by Charles Feltman)

DEVELOP A TRUSTING RELATIONSHIP



MOVE TO THE WHAT:

- Development and implementation of SBIRT screening in the school
- Collaboration on how students access the health center for screening and follow up appointments
- Conflict can come when values are not aligned

*****focus again on the why*****

CASE STUDY – DIVERSION TO SUSPENSION PROGRAM

- **May 2016** – Superintendent requests SUD BH provider in SBHC to lead a diversion program
- **September 2016** – LICSW hired, presented pilot program to replicate from another district.
- *Criteria – students caught intoxicated or in possession of substances or paraphernalia will be “diverted” to program*
- **October 2016** – referral forms sent to Deans of Students with requirements for referral
- **2016-17** school year under 5 referrals. Students given out of school suspension



CASE STUDY – DIVERSION TO SUSPENSION PROGRAM

- **2017-2018** Continued outreach to school administration about diversion, no referrals. BH referrals only
- **2018 – 2019** Stopped diversion program BH referrals only
- **Fall 2019** – Vaping crisis “Can you help us?”

**Within one month created and launched diversion program
for vaping nicotine**

CASE STUDY – DIVERSION TO SUSPENSION PROGRAM

- Between October 2019 – March 2020
- 34 referrals to diversion program
- 15 vaping THC
- 10 nicotine replacement therapy


PEABODY VETERANS MEMORIAL HIGH SCHOOL
"Home of the Tanners"


Ms. Cara Murtagh
Superintendent of Schools
Dr. Chris Lord
Assistant Superintendent of Schools
Mrs. Judith Maniatis
Assistant Principal

485 LOWELL STREET
PEABODY, MASSACHUSETTS 01960
Telephone ~ 978-536-4500
Facsimile ~ 978-536-4565
<http://www.peabodyk12.ma.us>

Dean of Students

A House ~ Mr. William Krol
B House ~ Mr. Edmund Tarallo
C House ~ Ms. Ashlen Fidalgo

Vaping Alternative Program: Sign-Off

Initial Referral Date: _____

Referring Dean of Students: Mr. Krol - A House
Mr. Tarallo - B House
Mrs. Fidalgo - C House
Mr. Canty - Community High School

I, _____ (name), have agreed to enroll in the Vaping Alternative Program offered by Peabody Veterans Memorial High School in partnership with the Health Center **in lieu of suspension/as part of a reduced consequence** (circle one) for my recent suspendable behavior related to vaping.

As part of the vaping diversion program, I understand that I must complete all of the following sessions as part of the #DitchJUUL Program offered by the Health Center at PVMHS:

Activity	Date Completed	Facilitator Signature
1. Initial intake meeting with the Health Center.		
2. Session 1: Dispelling the Health Myths of Vaping.		
3. Session 2: What are My Choices?		
4. Session 3: Quitting and Craving.		
5. Session 4: Maybe I Need More Help.		

Please return the completed form to your Dean by _____ (date, 25 School Days from Initial Referral Date). Failure to complete all sessions within the allotted time may result in suspension.



Leadership is all about people. It is not about organizations. It is not about plans. It is not about strategies. It is all about people-motivating people to get the job done. **You have to be people-centered.**

— *Colin Powell* —

AZ QUOTES