



Welcome to Oakland!

Advancing School Health in a Time of Reform

2014 Statewide Conference

#CAKidsHealth14

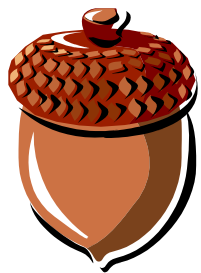
#CAKidsHealth14

School Finance Reform

LCFF = Local Control Funding Formula



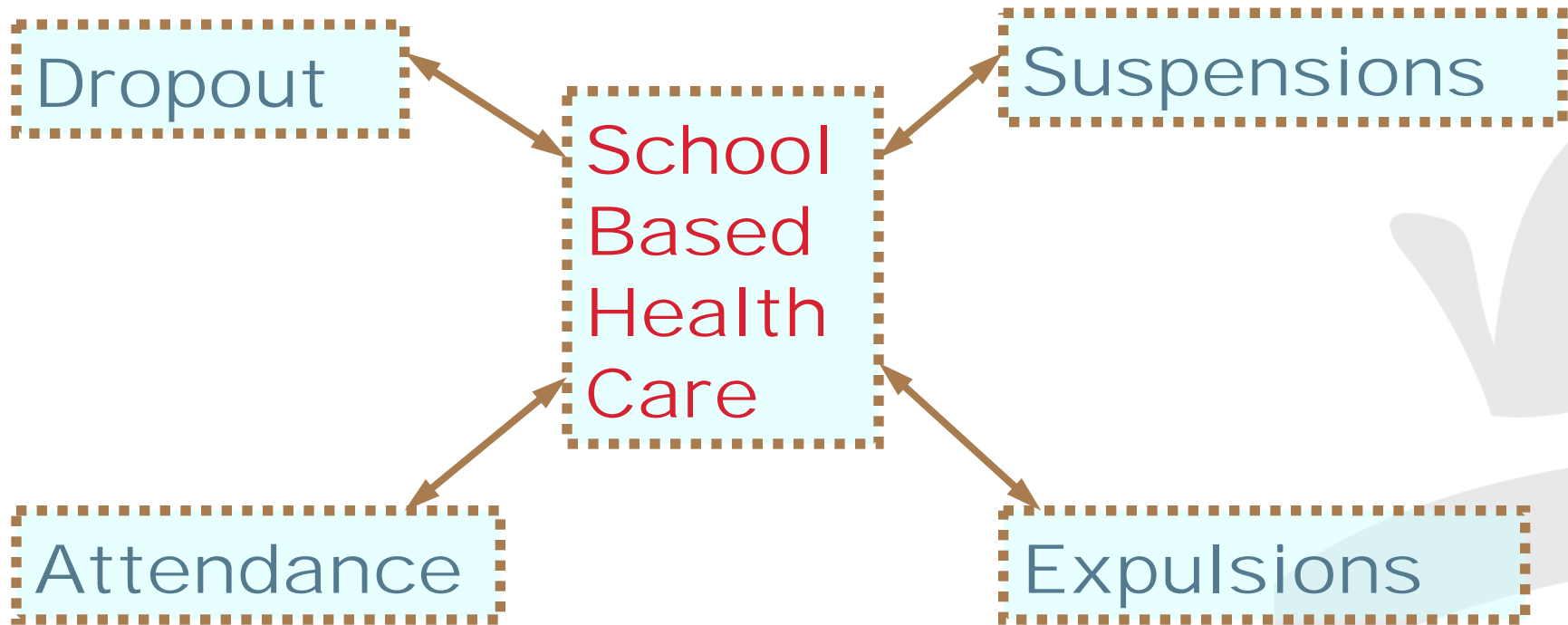
LCAP = Local Control Accountability Plan



Schools in low-income areas get more money.

All schools get more flexibility.

What is the Impact?



A green rectangular sign with a white border and a white dotted line along its inner edge. The sign is supported by two brown wooden posts. The text "Health Care Reform" is written in white, bold, sans-serif font, with "Health Care" on the top line and "Reform" on the bottom line. The sign is tilted upwards to the right. The background is a solid dark blue. On the right side of the image, there are faint, light gray abstract shapes that resemble a stylized bird or a leaf.

**Health Care
Reform**

Connecting Kids & Families to New Health Coverage Options

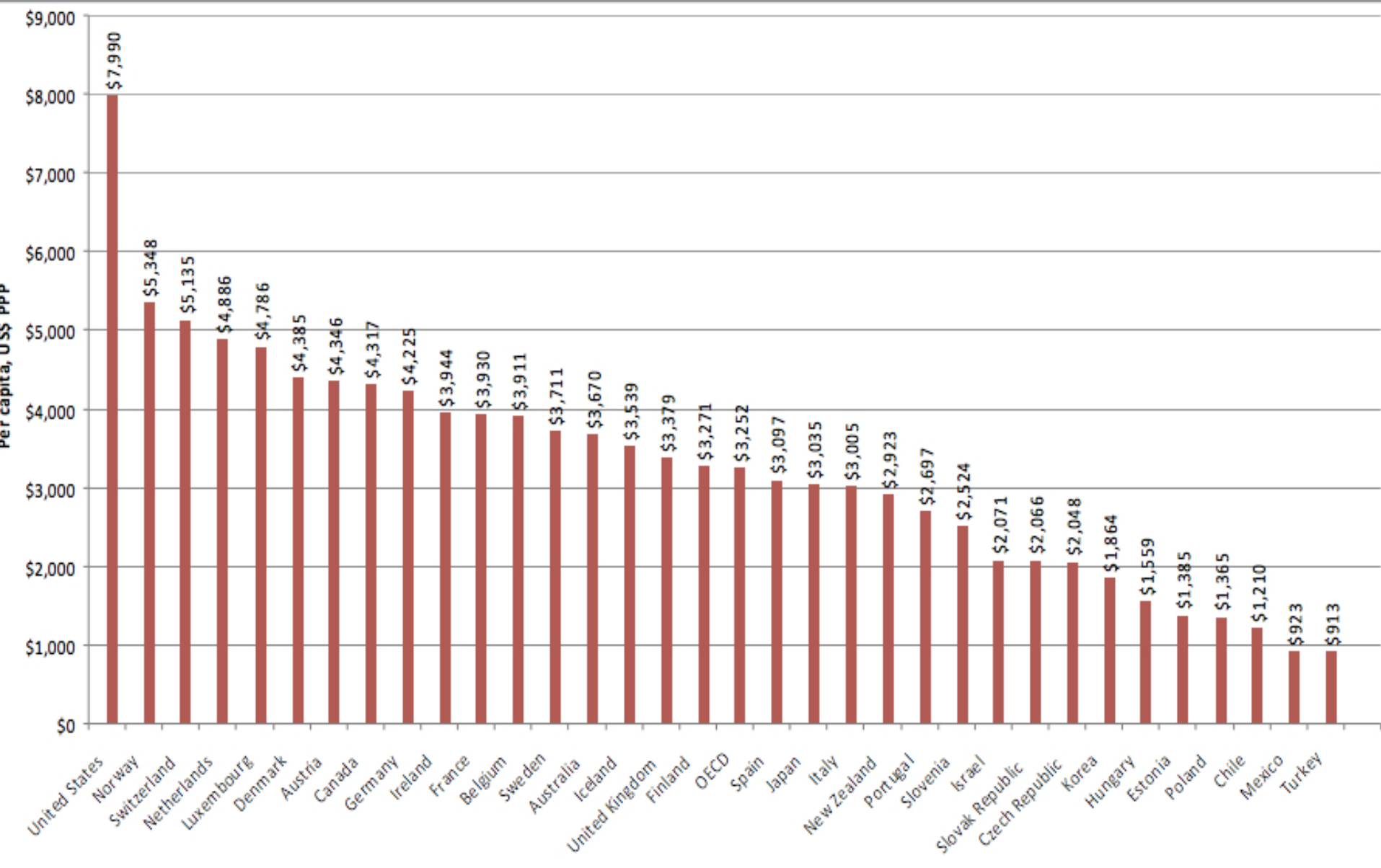
Join the campaign by signing up at www.allinforhealth.org.

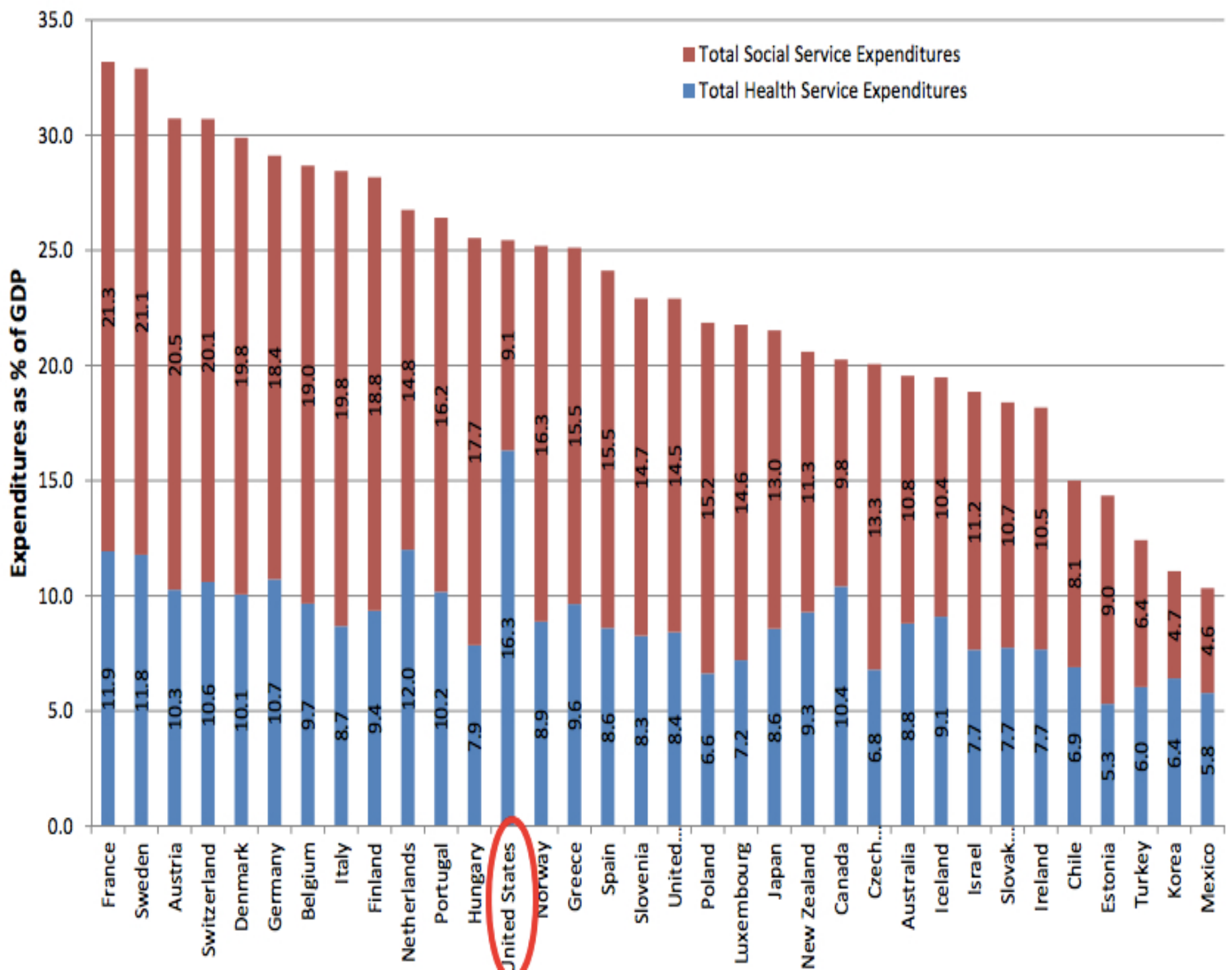


@AllInforHealth

A stack of three promotional cards for the 'all in' health campaign. The top card features the 'all in' logo and the text 'HEALTH CARE FOR ALL FAMILIES'. Below this, it says 'Affordable Health Coverage for Children & Families. Getting Health Coverage Just Got Easier.' and '123 WAYS TO ENROLL ->'. At the bottom of the card, it reads 'A project of The Children's Partnership www.allinforhealth.org'. The middle card is partially visible, showing 'HEALTH CARE FOR ALL FAMILIES' and 'Information and enroll... the option that's best for you: www.coveredca.com (800) 300-1506'. The bottom card is mostly obscured but shows 'Call 1 (800) 300-1506 for the location nearest you.' and a red banner at the very bottom that says 'OPEN ENROLLMENT: October 1, 2013 - March 31, 2014'.

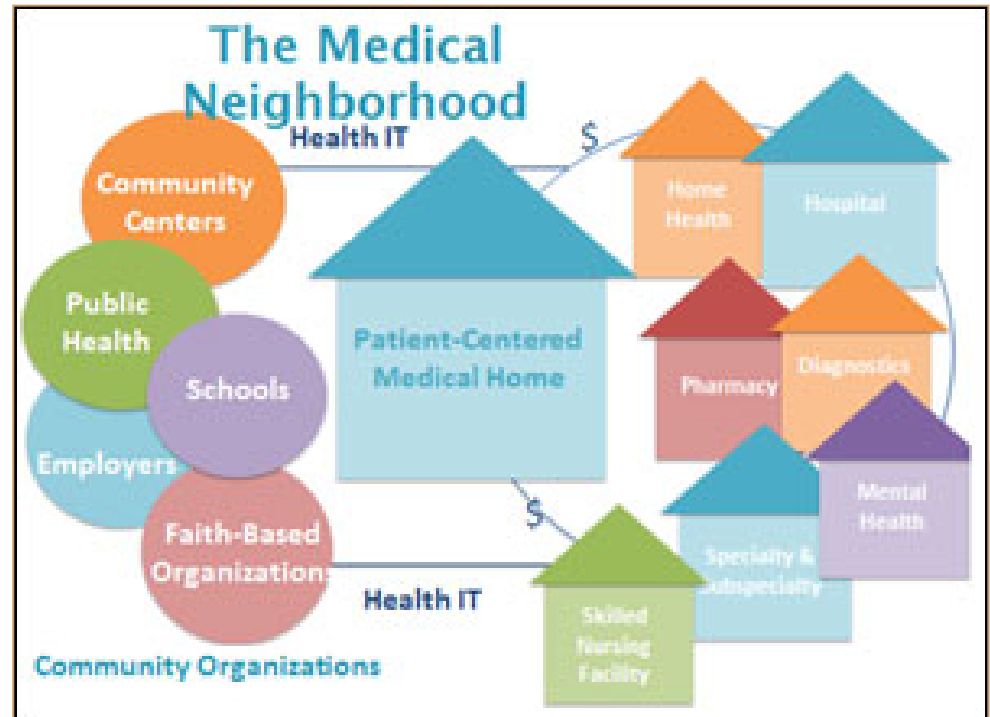
Spending on Health Care





Agency for Healthcare Research and Quality

“Medical Neighborhood”

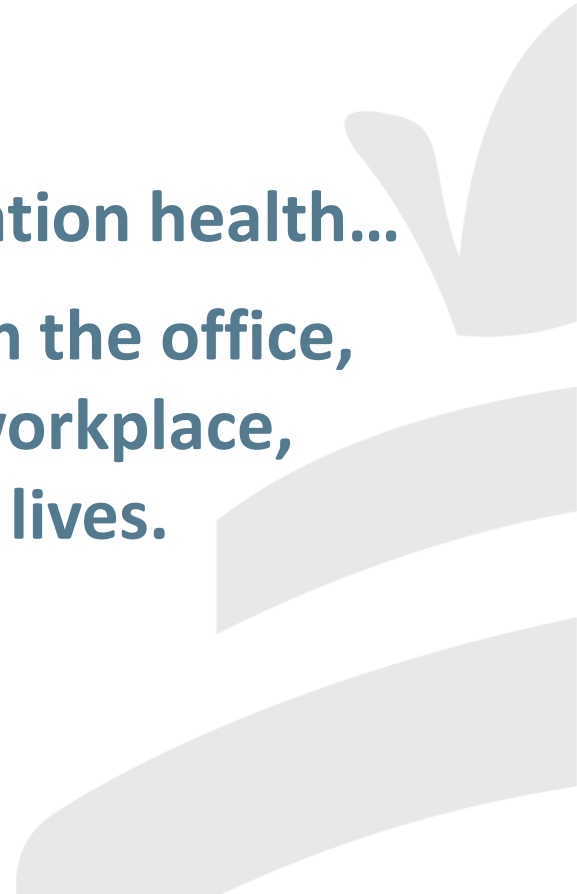


Strong community linkages that include both clinical and nonclinical services (such as personal care services, home-delivered meals, or **school-based health care**).

Journal of the American Medical Association

Stephen Shortell, U.C. Berkeley Haas School of Business

If the goal is improved overall population health... the place of care delivery moves from the office, clinic, or hospital bed to the home, workplace, school, or wherever people live their lives.



Where are the connections?

